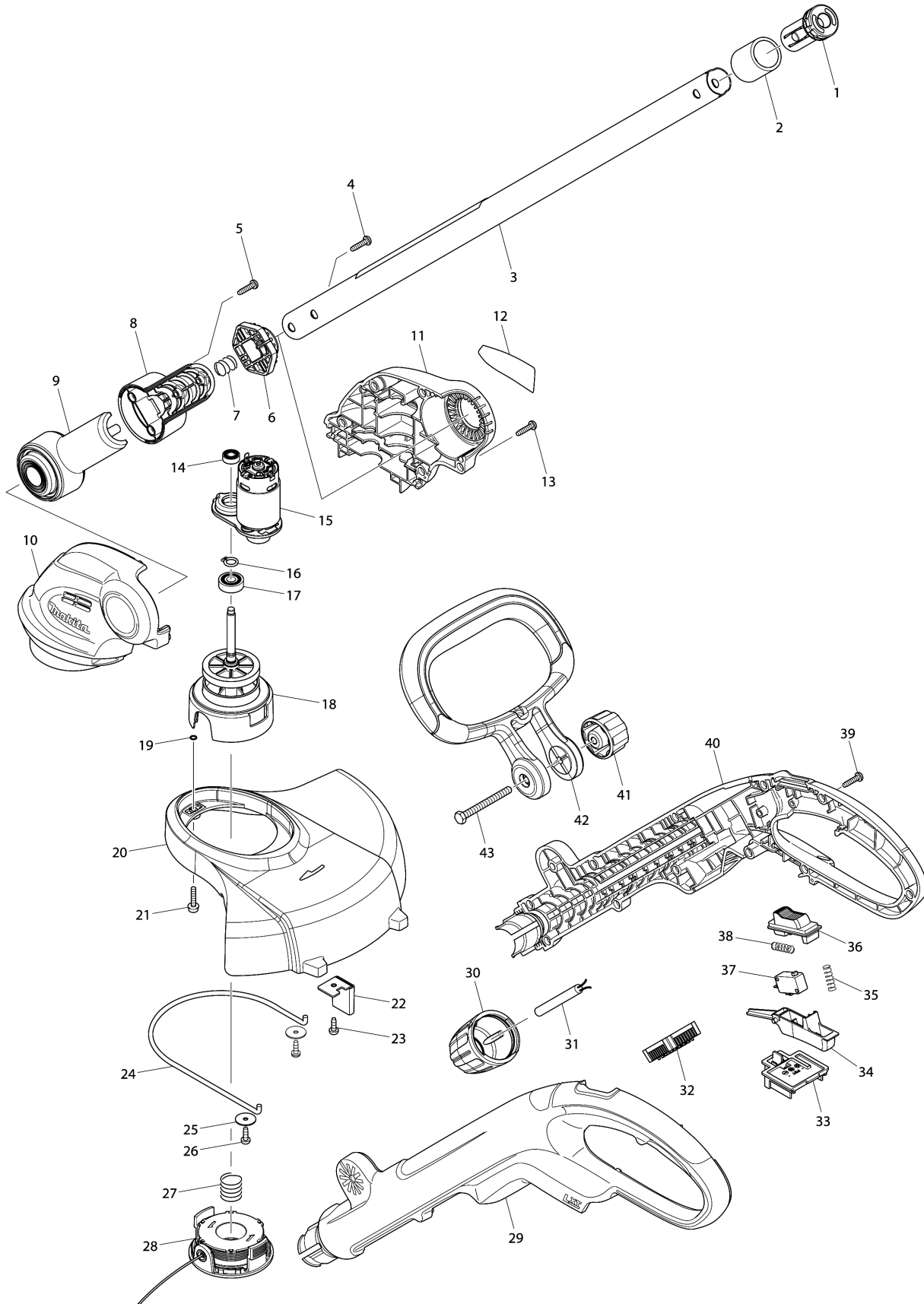


Model No.DUR181 260MM CORDLESS STRING TRIMMER





Model No.DUR181 260MM CORDLESS STRING TRIMMER

| Tétel | Cikkszám | Megnevezés                   | Átalakulás | Menny. | New/Old | Opc 1 | Opc 2 | Megjegyzés |
|-------|----------|------------------------------|------------|--------|---------|-------|-------|------------|
| 001   | 453357-2 | PIPE CAP                     |            | 1      |         |       |       |            |
| 002   | 422089-2 | RUBBER SLEEVE 25             |            | 1      |         |       |       |            |
| 003   | 141339-3 | PIPE25 COMPLETE              |            | 1      |         |       |       |            |
| C10   | 890862-2 | CAUTION LABEL                |            | 1      |         |       |       |            |
| 004   | 265995-6 | ÖNMETSZŐ CSAVAR<br>M4X18*    |            | 2      |         |       |       |            |
| 005   | 265995-6 | ÖNMETSZŐ CSAVAR<br>M4X18*    |            | 2      |         |       |       |            |
| 006   | 451896-6 | LOCK OFF BUTTON B            |            | 1      |         |       |       |            |
| 007   | 231113-8 | COMPRESSION SPRING 12        |            | 1      |         |       |       |            |
| 008   | 188870-8 | PIPE HOLDER SET              |            | 1      |         |       |       |            |
| D10   |          | INC. 9                       |            |        |         |       |       |            |
| 009   | 188870-8 | PIPE HOLDER SET              |            | 1      |         |       |       |            |
| D10   |          | INC. 8                       |            |        |         |       |       |            |
| 010   | 187413-3 | MOTOR HOUSING SET            |            | 1      |         |       |       |            |
| C10   | 263002-9 | GUMI CSAPSZEG 4 263002-9     |            | 2      |         |       |       |            |
| C20   | 263005-3 | GUMI CSAPSZEG 6 263005-3     |            | 2      |         |       |       |            |
| C30   | 931102-0 | HATLAPÚ ANYA M4 931102-0*    |            | 2      |         |       |       |            |
| D10   |          | INC. 11                      |            |        |         |       |       |            |
| 011   | 187413-3 | MOTOR HOUSING SET            |            | 1      |         |       |       |            |
| C10   | 263002-9 | GUMI CSAPSZEG 4 263002-9     |            | 2      |         |       |       |            |
| C20   | 263005-3 | GUMI CSAPSZEG 6 263005-3     |            | 2      |         |       |       |            |
| C30   | 931102-0 | HATLAPÚ ANYA M4 931102-0*    |            | 2      |         |       |       |            |
| D10   |          | INC. 10                      |            |        |         |       |       |            |
| 012   | 815V40-5 | DUR181 NAME PLATE            |            | 1      |         |       |       |            |
| 013   | 265995-6 | ÖNMETSZŐ CSAVAR<br>M4X18*    |            | 5      |         |       |       |            |
| 014   | 210006-2 | GOLYÓSCSAPÁGY 696ZZ<br>2106  |            | 1      |         |       |       |            |
| 015   | 629932-8 | DC MOTOR                     |            | 1      |         |       |       |            |
| 016   | 961004-6 | SEEGER-GYŰRŰ S-8<br>961004-6 |            | 1      |         |       |       |            |
| 017   | 211032-4 | GOLYÓSCSAPÁGY 608ZZ<br>1902* |            | 1      |         |       |       |            |
| 018   | 141338-5 | GEAR SHAFT COMPLETE          |            | 1      |         |       |       |            |
| C10   | 227283-9 | SPUR GEAR 48                 |            | 1      |         |       |       |            |
| C20   | 266744-4 | + PAN HEAD SCREW M4X8        |            | 1      |         |       |       |            |
| C30   | 326159-8 | GEAR SHAFT                   |            | 1      |         |       |       |            |
| C40   | 453360-3 | SPOOL HOLDER                 |            | 1      |         |       |       |            |
| 019   | 213023-1 | O-GYŰRŰ 4 HR3000C*           |            | 2      |         |       |       |            |
| 020   | 453353-0 | SAFETY COVER                 |            | 1      |         |       |       |            |
| 021   | 911139-3 | PAN HEAD SCREW M4X20<br>WG   |            | 2      |         |       |       |            |

Please order the parts with part number.

Print Date 2020/3/23

Model No.DUR181 260MM CORDLESS STRING TRIMMER

| Tétel  | Cikkszám  | Megnevezés                                   | Átalakulás | Menny. | New/Old | Opc 1 | Opc 2 | Megjegyzés |
|--------|-----------|--|------------|--------|---------|-------|-------|------------|
| 022    | 123169-4  | CORD CUTTER ASSEMBLY                         |            | 1      |         |       |       |            |
| 023    | 266020-6  | ÖNMETSZŐ CSAVAR M4X12                        |            | 1      |         |       |       |            |
| 024    | 326128-9  | WIRE GUARD                                   |            | 1      |         |       |       |            |
| 025    | 267071-2  | LAPOS ALÁTÉT 4 B05000                        |            | 2      |         |       |       |            |
| 026    | 266020-6  | ÖNMETSZŐ CSAVAR M4X12                        |            | 2      |         |       |       |            |
| 027    | 231352-0  | NYOMÓRUGÓ 17 8400DW                          |            | 1      |         |       |       |            |
| 028    | 196146-9  | SPOOL SET                                    |            | 1      |         |       |       |            |
| 029    | 187416-7  | HANDLE SET                                   |            | 1      |         |       |       |            |
| C10    | 263005-3  | GUMI CSAPSZEG 6 263005-3                     |            | 2      |         |       |       |            |
| D10    |           | INC. 40                                      |            |        |         |       |       |            |
| 030    | 453344-1  | LOCK SLEEVE                                  |            | 1      |         |       |       |            |
| 031    | 699058-0  | POWER SUPPLY CORD UNIT                       |            | 1      |         |       |       |            |
| 032    | 620112-9  | CONTROLLER                                   |            | 1      | *       |       |       |            |
| 032-1  | 632M91-7  | CONTROLLER UNIT                              | S          | 1      |         |       |       |            |
| 033    | 643852-2  | AKKUTARTÓ BHP456                             |            | 1      |         |       |       |            |
| 034    | 453338-6  | SWITCH LEVER                                 |            | 1      |         |       |       |            |
| 035    | 233068-3  | COMPRESSION SPRING 6                         |            | 1      |         |       |       |            |
| 036    | 453339-4  | LOCK OFF LEVER                               |            | 1      |         |       |       |            |
| 037    | 651891-8  | KAPCSOLÓ V-15-3A6<br>6901DW/4191             |            | 1      |         |       |       |            |
| 038    | 233068-3  | COMPRESSION SPRING 6                         |            | 1      |         |       |       |            |
| 039    | 265995-6  | ÖNMETSZŐ CSAVAR<br>M4X18*                    |            | 11     |         |       |       |            |
| 040    | 187416-7  | HANDLE SET                                   |            | 1      |         |       |       |            |
| C10    | 263005-3  | GUMI CSAPSZEG 6 263005-3                     |            | 2      |         |       |       |            |
| D10    |           | INC. 29                                      |            |        |         |       |       |            |
| 041    | 264072-1  | THUMB NUT M6                                 |            | 1      |         |       |       |            |
| 042    | 453340-9  | FRONT GRIP                                   |            | 1      |         |       |       |            |
| 043    | 921382-6  | HATLAPFEJŰ CSAVAR<br>M6X60 1050DW            |            | 1      |         |       |       |            |
| A01    | 125516-5  | BAND ASSEMBLY                                |            | 1      |         |       |       |            |
| A02    | 195246-2  | SAFETY GOGGLE                                |            | 1      | *       |       |       |            |
| A03    | 196148-5  | NYLON CORD 1.65-15M SET                      |            | 1      |         |       |       |            |
| A04D   | ***DC18RC | DC18RC FAST CHARGER                          |            | 1      |         |       |       |            |
| A05D   | 194204-5  | AKKU BL1830 18V 3,0AH LI-<br>ION AKKUMULÁTOR |            | 1      | *       |       |       |            |
| A05-1D | 194204-5  | AKKU BL1830 18V 3,0AH LI-<br>ION AKKUMULÁTOR | O          | 1      | *       |       |       |            |
| A05-2D | 197600-6  | BATTERY BL1830B SET                          | <          | 1      | *       |       |       |            |
| A05-3D | 197600-6  | BATTERY BL1830B SET                          | O          | 1      |         |       |       |            |
| E01    | 688172-7  | LINE FILTER                                  | S          | 1      |         |       |       |            |

Please order the parts with part number.

Print Date 2020/3/23